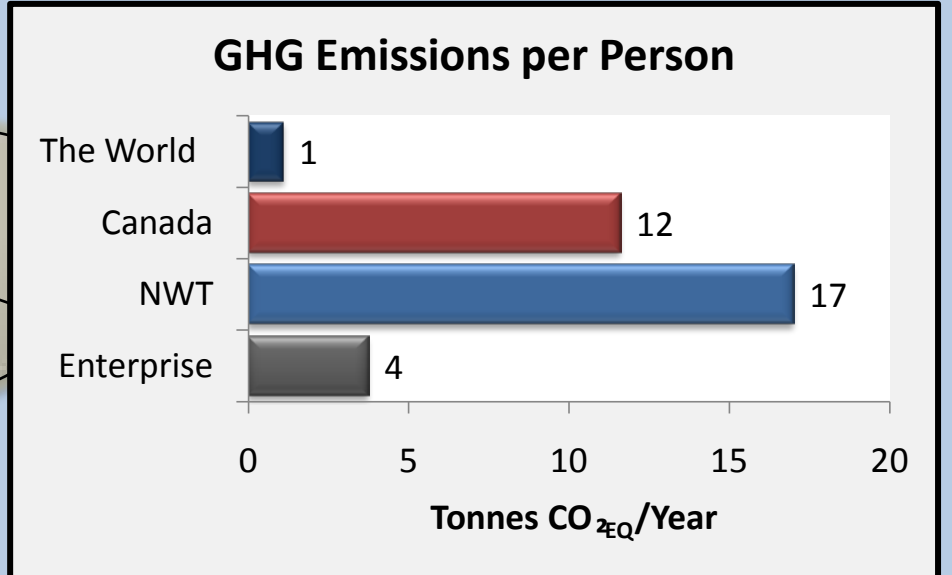


# Enterprise Energy Profile 2007/08

Population: 260  
Total Cost: \$570,000  
Total Energy: 18,000,000 MJ

Total Greenhouse Gas (GHG) Emissions:  
980 Tonnes CO<sub>2</sub>EQ



**Electricity - Hydro**  
26% of Cost  
14% of Energy  
0% of GHG

**Electricity - Diesel**  
1% of Cost  
2% of Energy  
3% of GHG

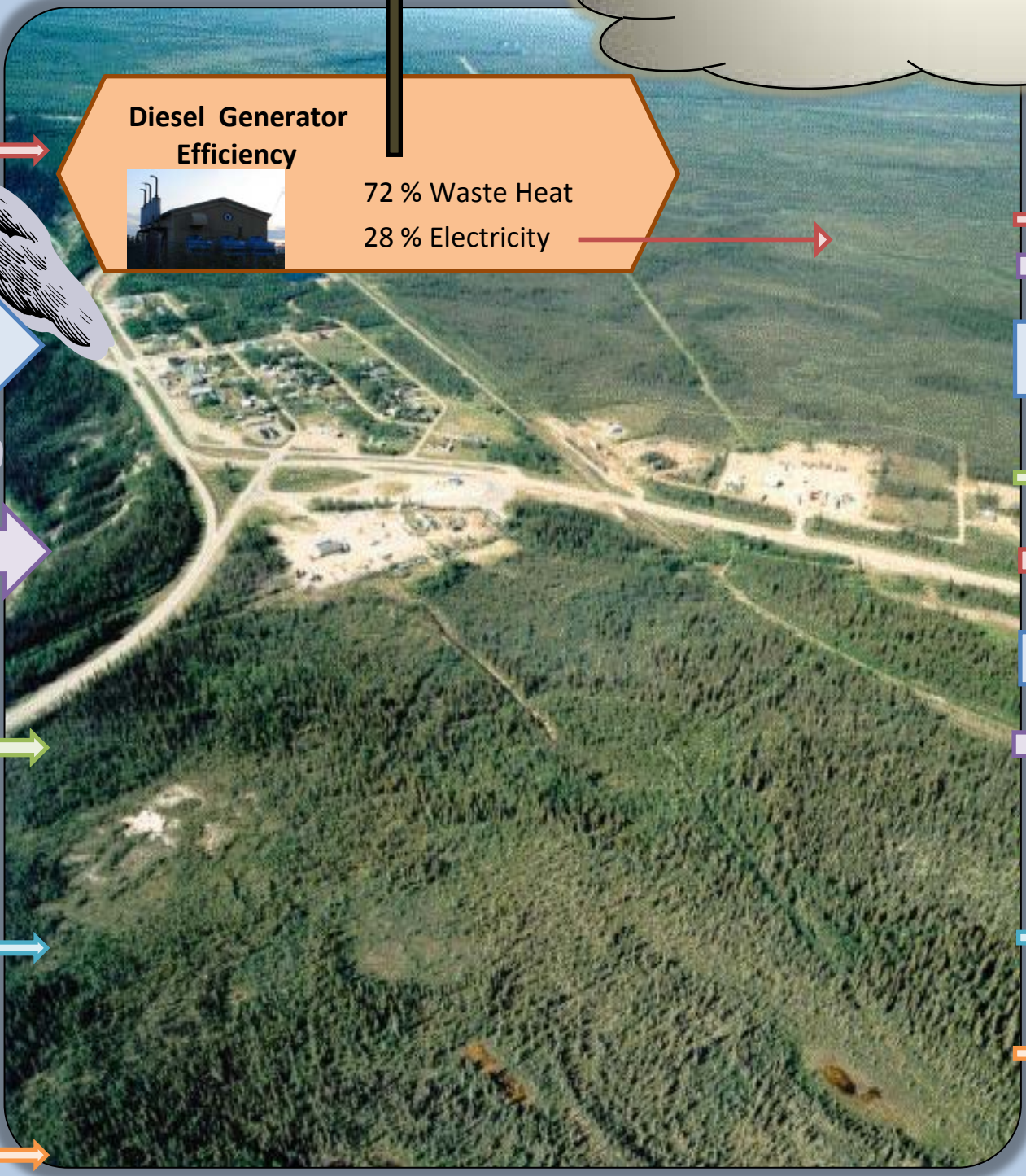
**Fuel Oil<sup>1</sup>**  
59% of Cost  
58% of Energy  
76% of GHG

**Propane**  
10% of Cost  
17% of Energy  
19% of GHG

**Wood**  
2% of Cost  
7% of Energy  
0% of GHG

**Gasoline<sup>2</sup>**  
2% of Cost  
2% of Energy  
2% of GHG

**Diesel<sup>2</sup>**  
0.2% of Cost  
0.2% of Energy  
0.3% of GHG



**Diesel Generator Efficiency**  
72 % Waste Heat  
28 % Electricity

**Homes**

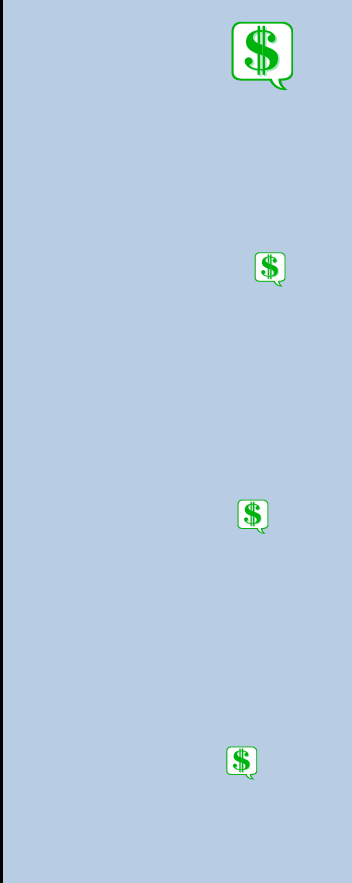
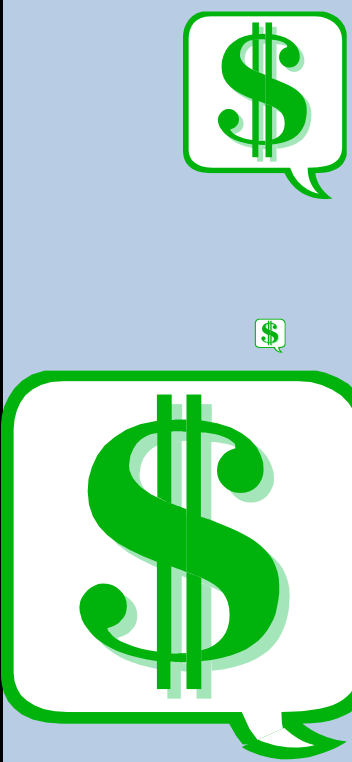
- 31% of Electricity
- 48% of Propane
- 60% of Fuel Oil
- 100% of Wood

**Other Buildings**

- 69% of Electricity
- 40% of Fuel Oil
- 52% of Propane

**Transportation**

- 100% of Gasoline
- 100% of Diesel



**Alternative Energy Sources for Your Community**

- Wood
- Waste Heat Recovery
- Solar Air Heating
- Solar Water Heating
- Solar Electricity
- Wind Turbine

**5 Ways to use less Energy and save Money**

- Change Your Habits
- Buy Energy Star
- Buy a Smaller Vehicle
- Fix Up Old Buildings
- Demand Best Energy Standards For New buildings

\*05 Feb 2010 some data were not available and assumptions have been made based on NWT averages  
1 - Incomplete data from fuel supplier/s  
2 - Hard to estimate local use



