



Forestry Programs and Initiatives in the T̓sideldel First Nation Traditional Territory

Percy Guichon, T̓sideldel First Nation Councillor & Past Chief
Executive Director of Central Chilcotin Rehabilitation Ltd. (CCR)

AGENDA

- 
- A photograph of two men standing in a forest. The man on the left is wearing a brown jacket and a black beanie, looking towards the right. The man on the right is wearing a red and black jacket, looking upwards. The forest is filled with tall evergreen trees and some deciduous trees with yellowing leaves in the background.
- **Brief history of T̓ideldel First Nation**
 - **T̓ideldel First Nation: Forestry Businesses**
 - **T̓ideldel First Nation Challenges and Opportunities in the Forest Industry**

T̓ideldel First Nation

- **T̓ideldel First Nation** is one of the six T̓ilhqot'in Nations - ***People of the River.***
- The T̓ilhqot'in lived off the Nen (Land), traded with its neighbours, and had **extensive trade routes** which demonstrates a **rich history** of **economic development.**
- Today, T̓ideldel First Nation is an **active participant** in the local economy, **taking the lead** in the management of forest resources in its territory.
- T̓ideldel is **self-determining**, working toward building a brighter future for its members.



Central Chilcotin
REHABILITATION LTD.



T̓ideldel First Nation

- Supreme Court of Canada Decision on Tsilhqot'in Title Case in June 2014.
- The 6 Tsilhqot'in Chiefs hung because of the Chilcotin War in 1864 were Exonerated by the Government of Canada in 2018.
- The Province of British Columbia passed legislation in 2019 to implement the **UN Declaration on the Rights of Indigenous Peoples**.
- **Barriers to reconciliation are being removed**, and First Nations are entering the modern business world, **fostering new relationships**.



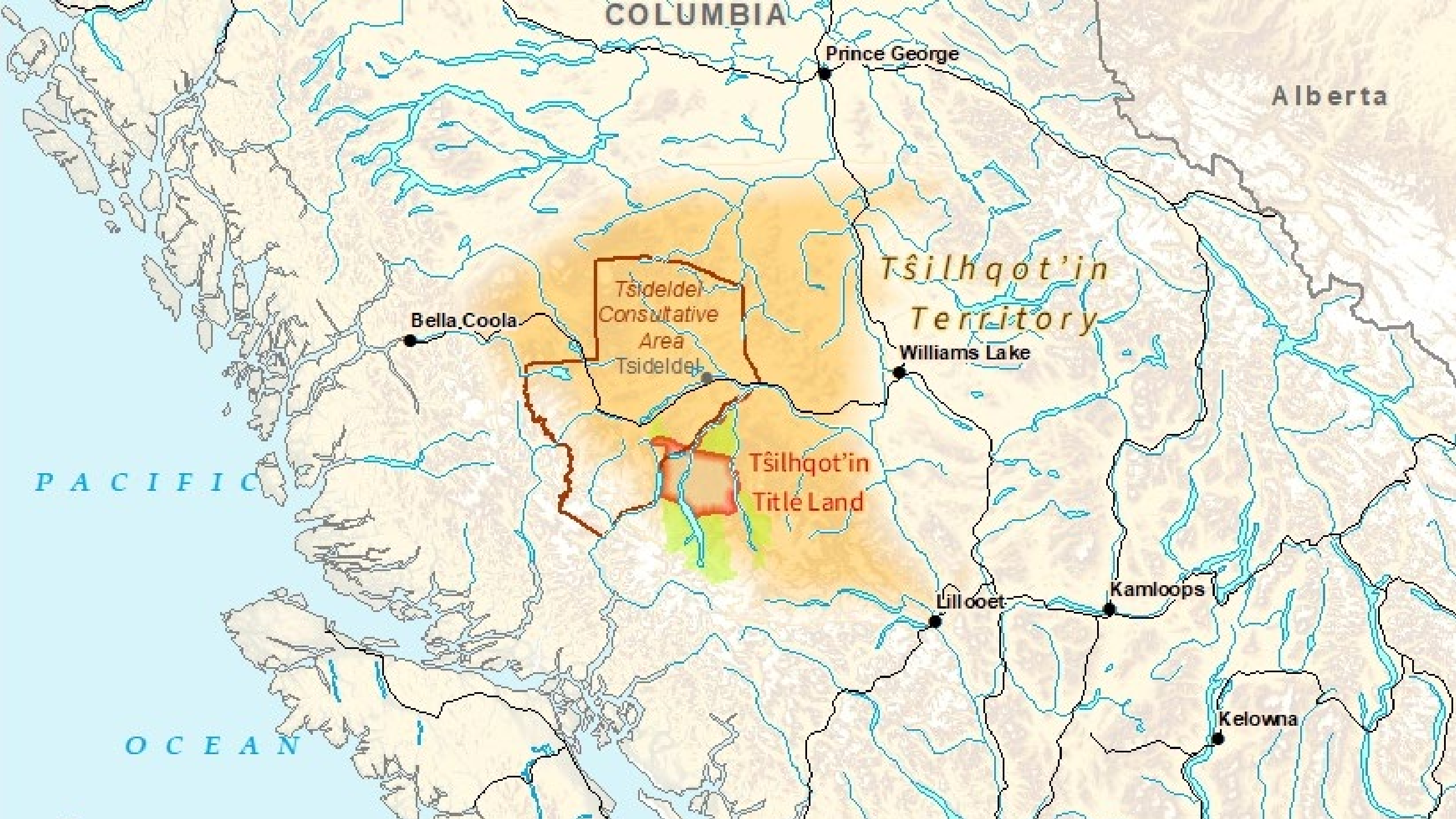
T̓ideldel Nen

T̓ideldel First Nation and the Tsilhqot'in people have been stewards and caretakers of Nen (land, water, plants, animals, resources, and more) since time immemorial.

T̓ideldel Nen has always provided for the people. Many still practice their tradition of hunting, fishing, and gathering throughout T̓ideldel Nen.

T̓ideldel First Nation strives for a balance between traditional and modern uses. The Nen provides resources for our modern economy, especially for forest products like timber, pulp wood, and biomass.





COLUMBIA

Prince George

Alberta

Bella Coola

Tsidel'el
Consultative
Area
Tsidel'el

Tsilhqot'in
Territory

Williams Lake

Tsilhqot'in
Title Land

Lillooet

Kamloops

Kelowna

PACIFIC

OCEAN

T̂sidelDel First Nation: Forestry Businesses



T̂siDelDel
DEVELOPMENT CORPORATION



Central Chilcotin
REHABILITATION LTD.



Tsi Del Del Enterprises Limited

Tsi Del Del Enterprises is a business venture between T̓ideldel First Nation and Tolko Industries. Its focus has been **harvesting timber** from the Nation's territory for sawmills in Williams Lake. The business is evolving toward the **full wood utilization** promoted by the T̓ideldel First Nation.

This year is the 32nd Anniversary of this award-winning venture.





Tsi Del Del Biomass Limited

Tsi Del Del Biomass was formed in 2018 to focus on **biomass** and **hog fuel recovery** from logging operations around Williams Lake.

The company has four main clients. Close to 2 million cubic metres of fibre has been recovered to date.





Central Chilcotin Rehabilitation Ltd.

2017: Established joint venture between **T̓ideldel First Nation** and **Tl'etinqox Government**.
2024: **Yunesit'in Government** joined CCR. The company focuses on the **rehabilitation of the forests** impacted by the mountain pine beetle and wildfires.

Central Chilcotin Rehabilitation Ltd.

REFORESTATION



FIBRE UTILIZATION



FIRE REHABILITATION



Central Chilcotin
REHABILITATION LTD.

Awards & Recognition



2022 BC Achievement
Foundation Award
Indigenous Business of
the Year



2024 Canadian
Biomass Award
Canadian Biomass Champion
Honourable Mention



2024 Communitas
Award
Excellence In Corporate
Social Responsibility



Forest Products Association
of Canada Award
Indigenous Business
of the Year



Challenges and Opportunities



Challenge: Mountain Pine Beetle Infestation

The Mountain Pine Beetles are **endemic** to Western Canada.

Successive years of warmer summer and winter combined with an abundance of mature suitable pine hosts led to the **massive epidemic** in the 1990s and the 2000s.



Opportunity: Timber Salvage

Timber salvage from the Mountain Pine Beetles began in the late 1990s and continues.

Clearcut with **green patch retention** is the usual method to salvage lodgepole pine.

In 2001, B.C. raised the Annual Allowable Cut to allow for timber salvage. The AAC uplift levels are temporary and are not sustainable.





Challenges: Wildfires

Opportunity: Burnt Timber Salvage

Clearcut logging with green patch retention in the Riske Creek Fire of 2017.

Timber was sold to Tolko and biomass to DRAX.



New Opportunity: Burnt Fibre Chipping & Grinding



Palmer Lake Road Biomass Project 2025

- Marginal pine stand burned in 2017 Hanceville Fire.
- Issues with Silviculture Levy and Stumpage Rates.
- Potential mechanical thinning of overly dense regeneration of pine understory.
- Potentially provide 250,000 m³/year to secondary manufacturing plants.



Sechanalyagh.
Thank you.



Central Chilcotin
REHABILITATION LTD.

Photo credits: CCR & Dennis Owen / Globe & Mail

