

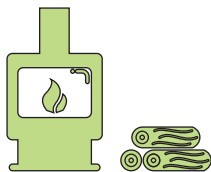
Arctic Energy  
Alliance

**JIDÌ DATTHÀK  
SRITÀHGWÌJÌINDAI GINJIK**

**JIDÌ DATTHÀK  
SRITÀHGWÌJÌINDAI GINJIK**



**ENERGY WORDS**



**GTC**  
GWICH'IN TRIBAL COUNCIL

Dinjii Zhuh G injik (Gwich'in) & English

# Contents

---

Introduction.....	i
Acknowledgements.....	ii
Terms.....	1
■ Energy concepts .....	2
■ Types of energy.....	12
■ Measuring energy .....	20
■ Fuels:	
renewable.....	24
non-renewable.....	32
■ Heating appliances & other technologies .....	42
■ Energy efficiency .....	52
■ Climate change.....	56
Glossary.....	60

# Introduction

---

*Energy Words* was developed as a tool to help communicate energy-related concepts in one of the Indigenous languages spoken in the Northwest Territories—specifically, Dinjii Zhuh Ginjik, the Gwich'in language. This book is to be used as a resource to help people communicate and learn. The terminology used in it was developed and compiled during a workshop with language experts, language speakers and linguists. The terminology in this book is not an exhaustive list of words that can be used to describe these concepts; there may be other terminology that is used.

The Arctic Energy Alliance created this book in partnership with Gwich'in Tribal Council from the terminology developed in a Gwich'in Energy Terminology Workshop. The terminology developed in the Gwich'in Energy Terminology Workshop does not belong to the Arctic Energy Alliance; it belongs to the Gwich'in people.

This publication is a free, open-source resource to advance the understanding of energy-related concepts.

# Acknowledgements

---

The Arctic Energy Alliance would like to acknowledge the contributions from the Gwich'in Tribal Council in executing the Gwich'in Energy Terminology Workshop in the summer of 2024, and their continued support to finalize the list of energy-related terminology.

A special thanks to the following participants in the Energy Terminology Workshop , who shared their knowledge, expertise and humour to develop the terms used in this publication.

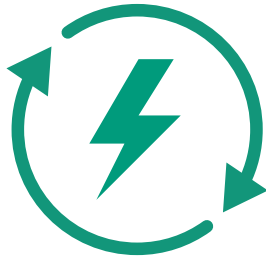
- Anges Mitchell
- Eleanor Mitchell-Firth
- John Norbert
- Mary Effie-Snowshoe
- Ruth Carroll
- Lisa Andre
- Janelle Wilson

# Terms

---

# Energy

---



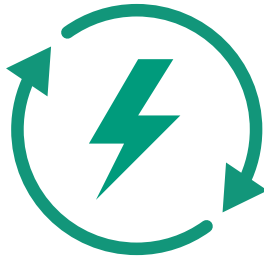
---

The ability to do work.

# jidii datthàk sritàhgwìjìindaii

---

Gwichya Gwich'in



---

# jidii datthàk sritàgwwìjìindaii

Teet'it Gwich'in

# Conservation

---



Reducing the amount you use by changing how you do things.



# ehneenjaa gwich'i' guk'atr'inahtih

---

Gwichya Gwich'in



---

# ehneenjaa gwich'i' guk'atr'inahtih

Teet'it Gwich'in

# Efficient

---



---

Get the most out for the smallest amount put in.

# gadhàn

---

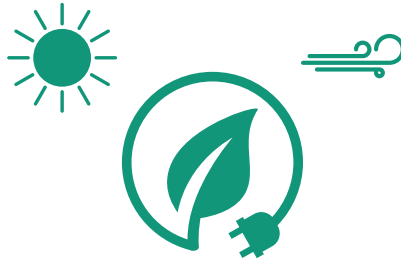


---

# gadhàn

# Renewable

---



---

Comes from a resource which replaces itself in a human lifetime, such as sunlight and plants.

# gwilen kwaa

---



---

# gwilen kwaa

# Sustainable

---



---

Using resources in a way that meets the needs of today without stopping future generations from being able to meet their needs.

# yeendòo geenjit guk'àndehtr'inahtyee

---

Gwichya Gwich'in



---

# yeendòo geenjit guk'àndehtr'inahtii

Teet'it Gwich'in

# Electricity

---



---

A type of energy that flows through wires to make many things work, like lights and appliances.



# vik'iighe' aadrii

---

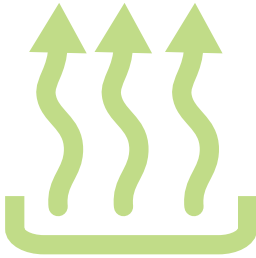


---

# vik'iighe' aadrii

# Heat

---



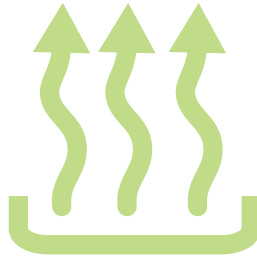
---

A form of energy that makes things warm or hot.

# gwidhah

---

Gwichya Gwich'in



# gwidhah

Teet'it Gwich'in

# Light

---



---

A type of energy that lets us see things.

# aadr̥ii

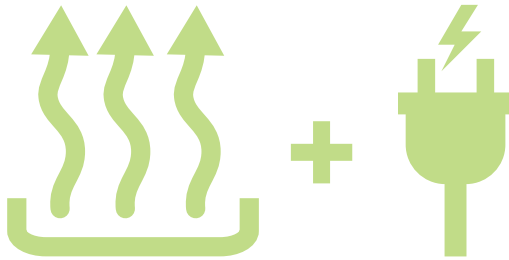
---



# aadr̥ii

# Co-generation

---

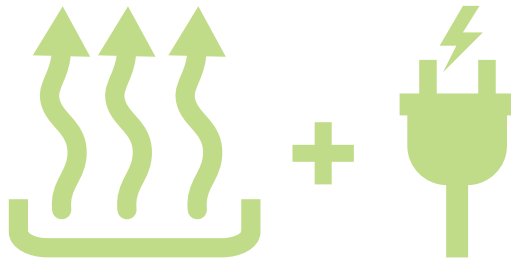


---

A single device that produces usable heat and electricity at the same time.

**iitsii ihłak, vik'ighe'  
aadrii ts'àt gwidhah  
nahtsik**

---



**iitsii ihłak, vik'ighe'  
aadrii ts'àt gwidhah  
nahtsik**

---

# Joules

---



---

A way to measure energy. Joules help us compare different amounts of energy in things like food, electricity, and movement.



**gwit'aai dahleii  
tr'oonjii k'agwaandaii**

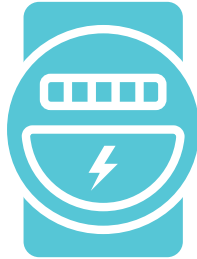
---



**gwit'aai dahleii  
tr'oonjii k'agwaandaii**

# Watts (or kilowatts)

---

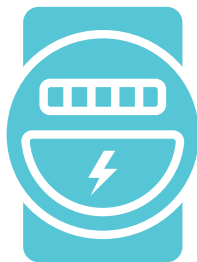


---

A measurement that equals one joule per second.  
(A kilowatt is 1,000 joules per second.)

# vit'aii dagwahchii dhitsii k'agwaandaii

---



---

# vit'aii dagwahchii dhitsii k'agwaandaii

# Biomass

---



---

Material that comes from plants and animals.  
This includes wood and animal waste.

**gwinzheh, dachan  
ts'ət nin trin gqij**

---

Gwichya Gwich'in



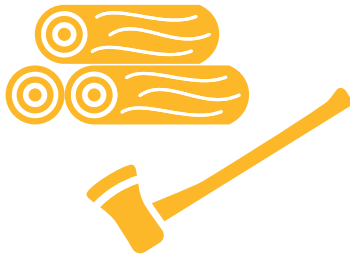
---

**gwinzhih, dachan  
ts'ət nin gwinduu gaii**

Teet'it Gwich'in

# Cordwood

---

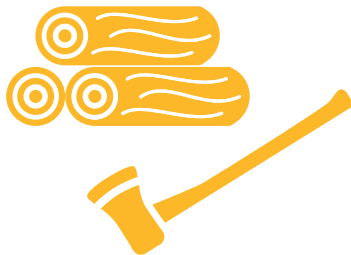


---

Wood cut for a fire or wood stove.

# troo

Gwichya Gwich'in

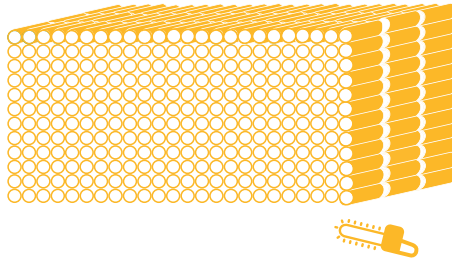


# troo

Teet'it Gwich'in

# Cord (unit of wood)

---



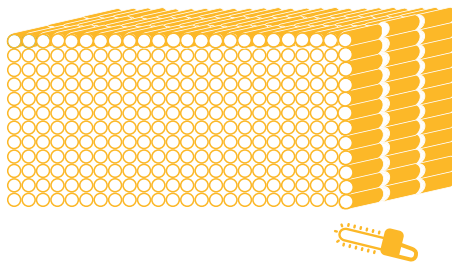
---

A standard unit of measurement for firewood consisting of  $3.6 \text{ m}^3$  of stacked firewood.



# troo tsee

Gwichya Gwich'in



# troo tsii

Teet'it Gwich'in

# Wood pellet

---



---

Wood dust, compressed into small pieces to burn.

# troo ddhàk

---

Gwichya Gwich'in



---

# troo ddhàk

Teet'it Gwich'in

# Fossil fuels

---



---

Energy sources like coal, oil, and natural gas that come from the remains of ancient plants and animals buried underground for millions of years.

# nan ghàì'

---



---

# nan ghàì'

# Diesel

---



---

A type of fossil fuel used for heating buildings,  
and for transportation and small engines.

# nan ghài'

---



---

# nan ghài'

# Gasoline

---



---

A type of fossil fuel used for transportation and small engines.



# khaii drinh

---



---

# khaii drinh

# Heating oil

---



---

Diesel, when it is used for heating buildings.

# nan ghài'



# nan ghài'

# Natural gas/ propane

---



A type of fossil fuel used for heating buildings  
and producing electricity.

# nan ghài'

---

Gwichya Gwich'in



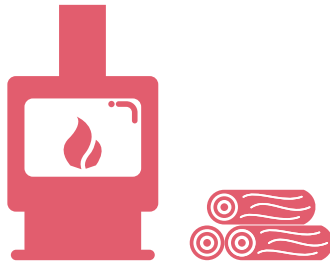
---

# nan ghài'

Teet'it Gwich'in

# Wood stove

---



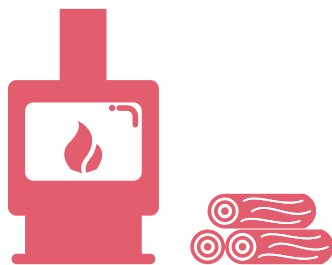
---

An enclosed heating device that burns wood to heat the room it's in.

# èetsii

---

Gwichya Gwich'in



---

# ìitsii

Teet'it Gwich'in

# Furnace

---



---

A device that heats air and blows it through ducts to heat a house or building.



# khaii jùuk'an' èetsii

---

Gwichya Gwich'in



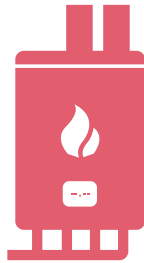
---

# khaii jùuk'an' ìitsii

Teet'it Gwich'in

# Boiler

---



---

A device that heats water and uses the hot water or steam to heat a house or building.

# chųų danaadlat èetsii

---

Gwichya Gwich'in



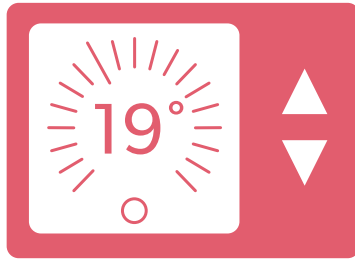
---

# chuu danaadlat ìitsii

Teet'it Gwich'in

# Thermostat

---



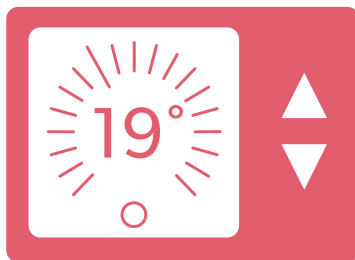
---

A device to adjust temperature  
inside a heated space.

**zheh gwizhit  
gwinìidhaa gwinìik'adh  
k'adhaandaii**

---

Gwichya Gwich'in



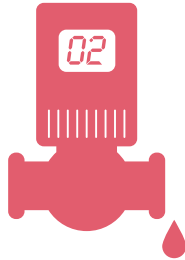
**zheh gwizhit  
gwinìidhaa gwinìik'oo  
k'adhaandaii**

---

Teet'it Gwich'in

# Pump

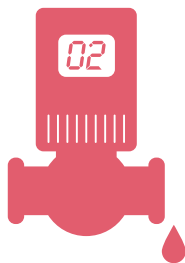
---



---

A device that moves something (water, heat, etc.)  
from one spot to another.

# tehtatr'ilii



# iitsii vàh sretat tr'igwilii

# Insulation

---



---

Material used to reduce the leakage of heat from hot places to cold places.



**łeth aant'at vee hàh  
zheh tr'igwiluu  
gwinìidhah**

---

Gwichya Gwich'in



---

**łuh vee t'at hàh  
zheh tr'igwiluh vàh  
gwinìidhaa**

Teet'it Gwich'in

# Air sealing

---



---

Reducing the amount of air leaving a building by closing gaps where that air escapes.

# vàh zheh gihdè'tr'q̣hchùk

---

Gwichya Gwich'in



---

# vàh zheh gihdè'tr'ahchùk

Teet'it Gwich'in

# Climate change

---



---

Changes to historic weather conditions that last over a long period of time.

# ejùk gweedhàh

---



---

# ejùk gweedhàh

# Greenhouse gas

---

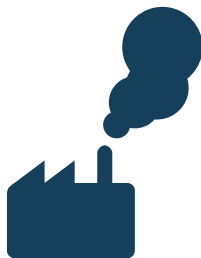


---

Gases such as carbon dioxide, methane, nitrous oxide, and others that trap heat and keep it in the atmosphere.

**nan ghàì' t'atr'ijahch'uu  
k'iighè' zheh khyuu  
gwidhah ahtsii**

---



---

**nan ghàì' t'atr'ijahch'uu  
k'iighè' zheh khyuu  
gwidhah ahtsii**

# Glossary

---

Throughout this book, only one term is presented in the Gwich'in language for each term in English. However, during the Gwich'in Energy Terminology Workshop, more than one term was identified in the Gwich'in language for some of the English terms. This glossary captures those additional terms. In some cases, terms will have translations in only one dialect.

ENGLISH	GWICHYA	TEETŁ'IT
<b>air sealing</b>		vàh gwidhah k'anaatii gihdè'tr'ahchùk
<b>cord (unit of wood)</b>	troo vik'è'tr'ichildri'	troo vik'è'tr'ichildri'
<b>efficient</b>	gwiinchii, gwiintsal gwit'agwijahch'uu nilih	gadhanh gwiinchii, gwiintsal gwit'agwijahch'uu nilih
<b>energy</b>	gwit'àii'	gwit'àii'



ENGLISH	GWICHYA	TEETŁ'IT
<b>fossil fuels</b>	ts'ii dejj gwinoo dài' gwinzheh ts'àt tth'an shek ghai'	
<b>pump (water)</b>		iitsii vâh chuu łehtat tr'injaa
<b>renewable</b>	nagwinilzheii jidii gwit'agwijahch'ù' k'eejit natr'igwiltsaih	nagwinilzheii jidii gwit'agwijahch'ù' k'eejit natr'igwiltsaih

*Published: 2024*

Also available in playing card format.

Other languages available:

- Tłıchǫ yatì

---

**Web:** [aea.nt.ca](http://aea.nt.ca)

**Email:** [info@aea.nt.ca](mailto:info@aea.nt.ca)

**Phone:** 1-877-755-5855 (toll-free)

**Offices in:**

- Behchokǝ
- Fort Simpson
- Hay River
- Inuvik
- Norman Wells
- Yellowknife



